



Executive Education Credit-bearing Programmes

Programme duration and dates

Start Date: September 2017

Application Deadline: August 2017

Delivery: Part-time

Admissions criteria

Applicants will need to have a Degree from a Medical School, preferably a 1st/2:1 class undergraduate degree or equivalent and significant work experience. In addition, you will need a minimum of 5 years clinical experience. We invite applications from: medical directors, associate directors, clinical directors and clinical leads; consultants and general practitioners; senior clinical academics and clinician scientists; other senior medical professionals with appropriate experience; and senior doctors in training with extensive clinical experience.

Fees & credits

Total UK Credits: 180

Total ECTS: 90

Tuition Fees: £28,000

Executive Masters in Medical Leadership

Cass Business School has long been the home of professional leadership. With our strong research background in healthcare business intelligence and leadership, we have collaborated with clinicians, healthcare partners and experts to create this bespoke programme.

PROGRAMME OVERVIEW

There is growing recognition among policy-makers and managers in the UK and around the world that nurturing effective medical leaders is critical. We are excited to offer a programme that helps address this need – and look forward to playing our part in helping you improve healthcare organisations and systems, and ultimately peoples' health and lives.

The Executive Masters in Medical Leadership is a specialised degree that offers advanced leadership training to doctors. The programme develops leaders who can transform healthcare systems in ways that ultimately help people live longer, healthier lives. Grounded in research that shows that medical leadership improves healthcare system performance, this degree is distinct in targeting doctors. We have structured it in a way to fit into your busy schedule as a doctor, by offering the degree on a part-time, flexible basis.

Our degree will enable you to realise the Faculty of Medical Leadership and Management's Leadership and Management Standards for Medical Professionals. A key feature of our programme is its dual focus on personal development and research-based conceptual knowledge. The aim is to combine Masters-level learning about people, innovation and change in healthcare with your own development as an effective leader in this environment. In doing so, we will be drawing on Cass Business School's world-class research capabilities and experience of executive development.

WHO IS THE PROGRAMME FOR?

Unlike most management degrees in healthcare, our programme has been designed specifically for doctors. Participants will include: medical directors, associate directors, clinical directors and clinical leads; consultants and general practitioners; senior clinical academics and clinician scientists; other senior medical professionals with appropriate experience; senior doctors in training with extensive clinical experience.

FOCUS AND STRUCTURE

The programme is designed and structured to allow for intellectual progression through core modules taught over a two year period. You will attend one two-day block session (on a Friday and Saturday) each month during the academic year (September through June). Additionally, you will have the opportunity to attend social and networking events where you can engage with the larger community of Cass alumni and friends in healthcare.

Some of the topics you will focus on include 'Managerial Accounting and Business Planning for Medical Leaders', 'Managing People and Change in Healthcare', 'Healthcare Analytics', 'Leading Innovation in Healthcare', 'A Management Placement: Learning across Contexts', 'Regulation, Policy and Strategy in Health' and 'Expert Leadership'.



Cass Executive Education
200 Aldersgate Street
London EC1A 4HD
T: +44 (0)20 7040 8269
E: execed@city.ac.uk
www.cass.city.ac.uk/execed



Contacting us

The programme directors on the degree are Dr Amit Nigam and Dr Amanda Goodall. If you would like to discuss how your healthcare organisation can benefit from offering the degree or our executive education opportunities, please contact amanda.goodall.1@city.ac.uk.

PROGRAMME BENEFITS

Personal leadership development

You will develop reflective awareness of your own leadership and management style, strengths and weaknesses. This personal development focus is built into our curriculum. You will learn how to negotiate successfully, manage conflict, and have difficult conversations. You will have regular sessions with an experienced executive coach who will work with you to recognise and meet the leadership and managerial challenges you face.

Conceptual knowledge

You will be introduced to conceptual knowledge that will be critical to your development as manager and leader. This includes contextual knowledge (e.g. regulation and policy) that will allow you to engage with and transform health systems; people management skills (e.g. teams, managing culture, decision-making, negotiations) that will help you effectively mobilise support from others; and analytical knowledge (e.g. managerial accounting, healthcare analytics) that will give you practical tools that you need to identify, communicate, and achieve improvements in your own organisation.

A practical emphasis

Our emphasis on experiential learning will help you translate the conceptual knowledge into practical application. The programme is designed around exercises, cases, simulations, action learning sets, a short work placement with a radically different healthcare provider (e.g. financially rich or poor) and other experiential tools.

An impact project

As part of the programme you will complete a leadership impact project that enables you to synthesise what you have learned and apply it in your career. You will lead and implement a change project in a host healthcare organisation. The specific task will be negotiated with the participating institution, which could be your own or another organisation. The project will give you the chance to lead a major change initiative with the support of a structured learning community including an academic mentor and/or peer.

FLEXIBLE LEARNING

Each carefully crafted module on our Executive Masters programme is available as a stand-alone open programme offering. As a healthcare employer, you may wish to offer all your clinical directors insight into 'Managerial Accounting and Business Planning for Medical Leaders' or 'Personal Leadership Development'. We can tailor a set of modules to suit your organisational needs and participants can, if they choose, add modules themselves.

SIR JOHN CASS BUSINESS SCHOOL

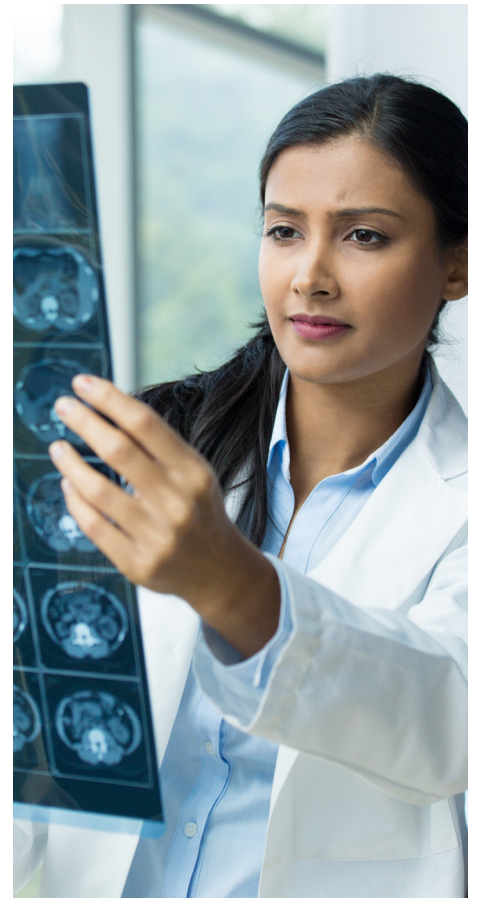
Based in the heart of London, with unrivalled access to the capital's global business network and leaders, Cass Business School is consistently ranked amongst the best in the world. For nearly half a century, our reputation for excellence in research and business education has attracted innovative faculty and industry experts from around the world. Our mission is to provide academic excellence for business and the professions.

AN EXPERIENCE IN THE HEART OF GLOBAL BUSINESS

London is one of the world's great business centres and a hub of creativity and innovation. With the Lord Mayor of London as our Chancellor, we provide unparalleled connections to an elite network of businesses and organisations. Learn with the people shaping markets and leading new trends in our executive development facility, designed with active, collaborative working in mind.

NEXT STEPS

If you would like more information about the degree programme and the application process please email execed@city.ac.uk.



This programme is currently under development and is subject to final approval. For further information, please contact Cass Executive Education.